

\$499,900 - 54 Pondsides Crescent, Blackfalds

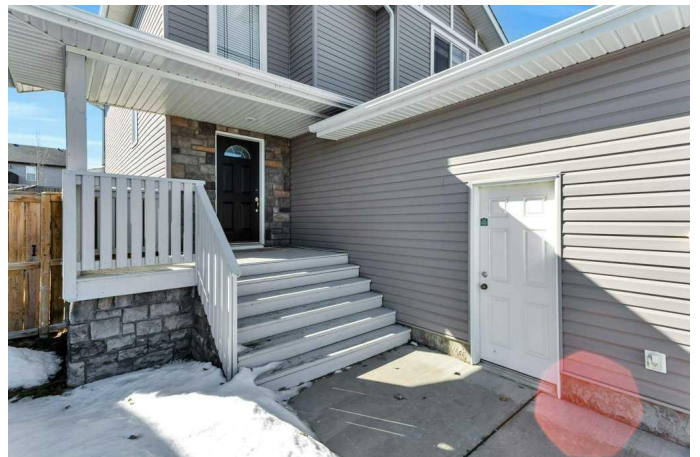
MLS® #A2205179

\$499,900

4 Bedroom, 4.00 Bathroom, 1,760 sqft
Residential on 0.14 Acres

Panorama Estates, Blackfalds, Alberta

Great family home in Blackfalds!! This fully developed 2 storey is a perfect layout for a growing family, there are a total of 4 large bedrooms (3 up, 1 down), and 4 baths including the beautiful master bedroom ensuite with a tiled shower and jetted tub!! A double attached garage takes care of parking and a large covered front veranda welcomes you to the bright, open concept main level. The living room features a large south facing picture window overlooking the backyard and a gas fireplace with mantle and tile surround. The kitchen offers a functional layout with a huge center island, ample medium stained oak cabinets, pots and pan drawers, built in wine rack, crown mouldings, stainless steel appliances and pantry. The connected dining space with garden door access to the covered deck and backyard provides easy access for evening BBQ's. There is a 2 piece main floor bath, main floor laundry is located just off the attached garage and offers built in cabinets providing tons of storage. The upper level is home to the main bedroom can easily accommodate a king bed plus multiple pieces of furniture, has a walk in closet with built in shelving and a spa like ensuite with a raised vanity, jetted tub and separate shower with tiled surround. 2 additional bedrooms located on the same level as the primary bedroom are both a generous size and share a 4 piece bath with tiled shower surround. The fully finished basement has roughed in floor heat, and offers a large rec room, 4th bedroom, 3 piece



bathroom and space for storage Other great features of this fine home include; central vacuum, central air conditioning, new washer and dryer in 2022, new shingles in 2023 and new hot water tank in 2024, plus a 22x24 garage with shelving. The backyard is fully fenced with gas line to deck and separate dog run, RV parking along with back alley access and a great play house for the kids! Located directly across from a walking path that leads to Centennial Park with wetlands and walking trails, with easy access to shopping and schools.

Built in 2006

Essential Information

MLS® #	A2205179
Price	\$499,900
Bedrooms	4
Bathrooms	4.00
Full Baths	3
Half Baths	1
Square Footage	1,760
Acres	0.14
Year Built	2006
Type	Residential
Sub-Type	Detached
Style	2 Storey
Status	Active

Community Information

Address	54 Pondside Crescent
Subdivision	Panorama Estates
City	Blackfalds
County	Lacombe County
Province	Alberta
Postal Code	T4M 0G2

Amenities

Parking Spaces	2
Parking	Concrete Driveway, Double Garage Attached, Garage Door Opener, RV Access/Parking
# of Garages	2

Interior

Interior Features	Breakfast Bar, Ceiling Fan(s), Central Vacuum, French Door, Jetted Tub, Kitchen Island, Open Floorplan, Pantry, Recessed Lighting, Storage, Vinyl Windows, Walk-In Closet(s)
Appliances	Dishwasher, Microwave, Refrigerator, Stove(s), Washer/Dryer, Window Coverings
Heating	Fireplace(s), Forced Air, Natural Gas
Cooling	Central Air
Fireplace	Yes
# of Fireplaces	1
Fireplaces	Gas, Living Room, Mantle
Has Basement	Yes
Basement	Finished, Full

Exterior

Exterior Features	Storage
Lot Description	Back Lane, Irregular Lot, Landscaped
Roof	Shingle
Construction	Stone, Vinyl Siding, Wood Frame
Foundation	Poured Concrete

Additional Information

Date Listed	March 25th, 2025
Days on Market	9
Zoning	R1M

Listing Details

Listing Office	RE/MAX real estate central alberta
----------------	------------------------------------

Data is supplied by Pillar 9â„¢ MLSÂ® System. Pillar 9â„¢ is the owner of the copyright in its MLSÂ® System. Data is deemed reliable but is not guaranteed accurate by Pillar 9â„¢. The trademarks MLSÂ®, Multiple Listing ServiceÂ® and the associated logos are owned by The Canadian Real Estate Association (CREA) and identify the quality of services provided by real estate professionals who are members of CREA. Used under license.