

\$375,000 - 105, 4 Cuendet Industrial Way, Sylvan Lake

MLS® #A2183210

\$375,000

0 Bedroom, 0.00 Bathroom,
Commercial on 0.00 Acres

Beju Industrial Park, Sylvan Lake, Alberta

SUPER CLEAN AND SHINY! LOCATION is a HOT one on Hwy 20 with access road frontage give great visibility and exposure to your growing business. Other tenants bringing in lots of traffic. This unit has the larger mezzanine 725 sq ft. Large 16 GARAGE DOOR makes it easy to convert to vehicle storage or receiving area. Back 1400 sf area is fully finished with vinyl flooring, washroom and shower/change room. See more details on picture comments. CH zoning allows for a wide variety of uses including Day Care, Restaurant, School/training etc.

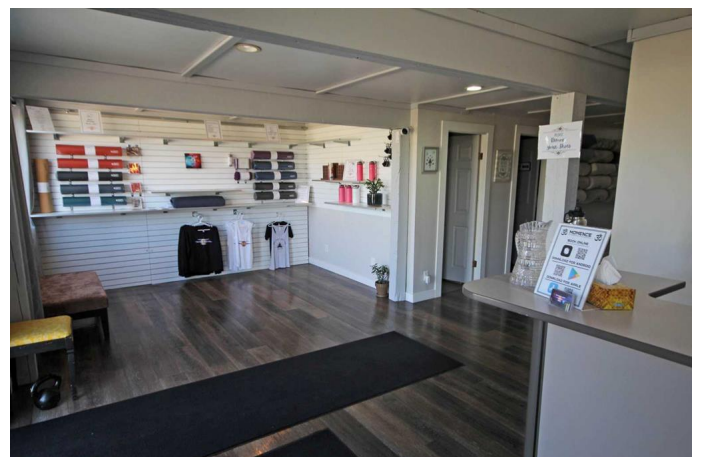
Built in 2003

Essential Information

MLS® #	A2183210
Price	\$375,000
Bathrooms	0.00
Acres	0.00
Year Built	2003
Type	Commercial
Sub-Type	Retail
Status	Active

Community Information

Address	105, 4 Cuendet Industrial Way
Subdivision	Beju Industrial Park
City	Sylvan Lake
County	Red Deer County



Province Alberta
Postal Code T4S 2J7

Interior

Heating Natural Gas, Ceiling, High Efficiency

Additional Information

Date Listed December 11th, 2024

Days on Market 113

Zoning CH

Listing Details

Listing Office Royal LePage Network Realty Corp.

Data is supplied by Pillar 9â„¢ MLSÂ® System. Pillar 9â„¢ is the owner of the copyright in its MLSÂ® System. Data is deemed reliable but is not guaranteed accurate by Pillar 9â„¢. The trademarks MLSÂ®, Multiple Listing ServiceÂ® and the associated logos are owned by The Canadian Real Estate Association (CREA) and identify the quality of services provided by real estate professionals who are members of CREA. Used under license.