

# \$230,000 - 1206, 5220 50a Avenue, Sylvan Lake

MLS® #A2167977

## \$230,000

2 Bedroom, 2.00 Bathroom, 960 sqft  
Residential on 0.04 Acres

Downtown, Sylvan Lake, Alberta

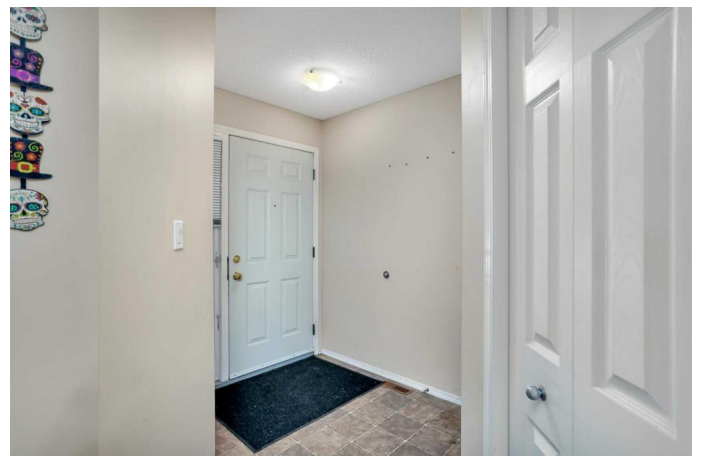
Welcome to Rainbow Park! A fantastic opportunity to invest in real estate with this condo style townhouse in Sylvan Lake. The home features 2 bedrooms, 2 bathrooms, a neat kitchen with plenty of cabinets, in-suite laundry, nice size living room featuring a corner gas fireplace plus patio door access to a deck. The master bedroom includes a walk-in closet and a 4 piece ensuite. Property is just a short walk to the beach! A variety of amenities are nearby, the marina, golf course and Lakeshore Drive restaurants and nightlife. The unit is currently vacant.

Built in 2003

## Essential Information

MLS® #	A2167977
Price	\$230,000
Bedrooms	2
Bathrooms	2.00
Full Baths	2
Square Footage	960
Acres	0.04
Year Built	2003
Type	Residential
Sub-Type	Row/Townhouse
Style	Bungalow
Status	Active

## Community Information



Address	1206, 5220 50a Avenue
Subdivision	Downtown
City	Sylvan Lake
County	Red Deer County
Province	Alberta
Postal Code	T4S 1E5

### **Amenities**

Amenities	Gazebo, Park, Snow Removal
Parking Spaces	2
Parking	Assigned, Parking Pad

### **Interior**

Interior Features	Storage
Appliances	Microwave, Refrigerator, Stove(s), Washer/Dryer
Heating	Forced Air
Cooling	None
Fireplace	Yes
# of Fireplaces	1
Fireplaces	Gas
Basement	None

### **Exterior**

Exterior Features	None
Lot Description	Gazebo
Roof	Asphalt Shingle
Construction	Vinyl Siding, Wood Siding
Foundation	None

### **Additional Information**

Date Listed	September 23rd, 2024
Days on Market	171
Zoning	W-DC
HOA Fees	314
HOA Fees Freq.	MON

### **Listing Details**

Listing Office	eXp Realty
----------------	------------

deemed reliable but is not guaranteed accurate by Pillar 9â„¸. The trademarks MLSÂ®, Multiple Listing ServiceÂ® and the associated logos are owned by The Canadian Real Estate Association (CREA) and identify the quality of services provided by real estate professionals who are members of CREA. Used under license.